

Skybrudstiltag på Borrebyvej

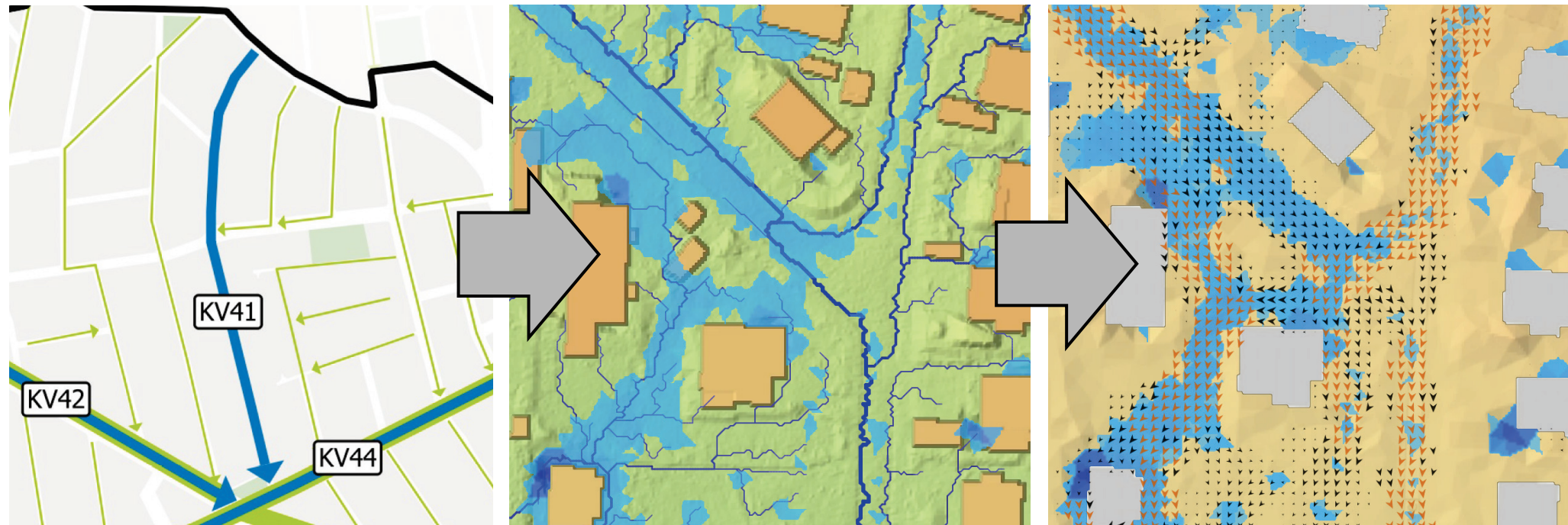
Mathias Pape
Civilingeniør

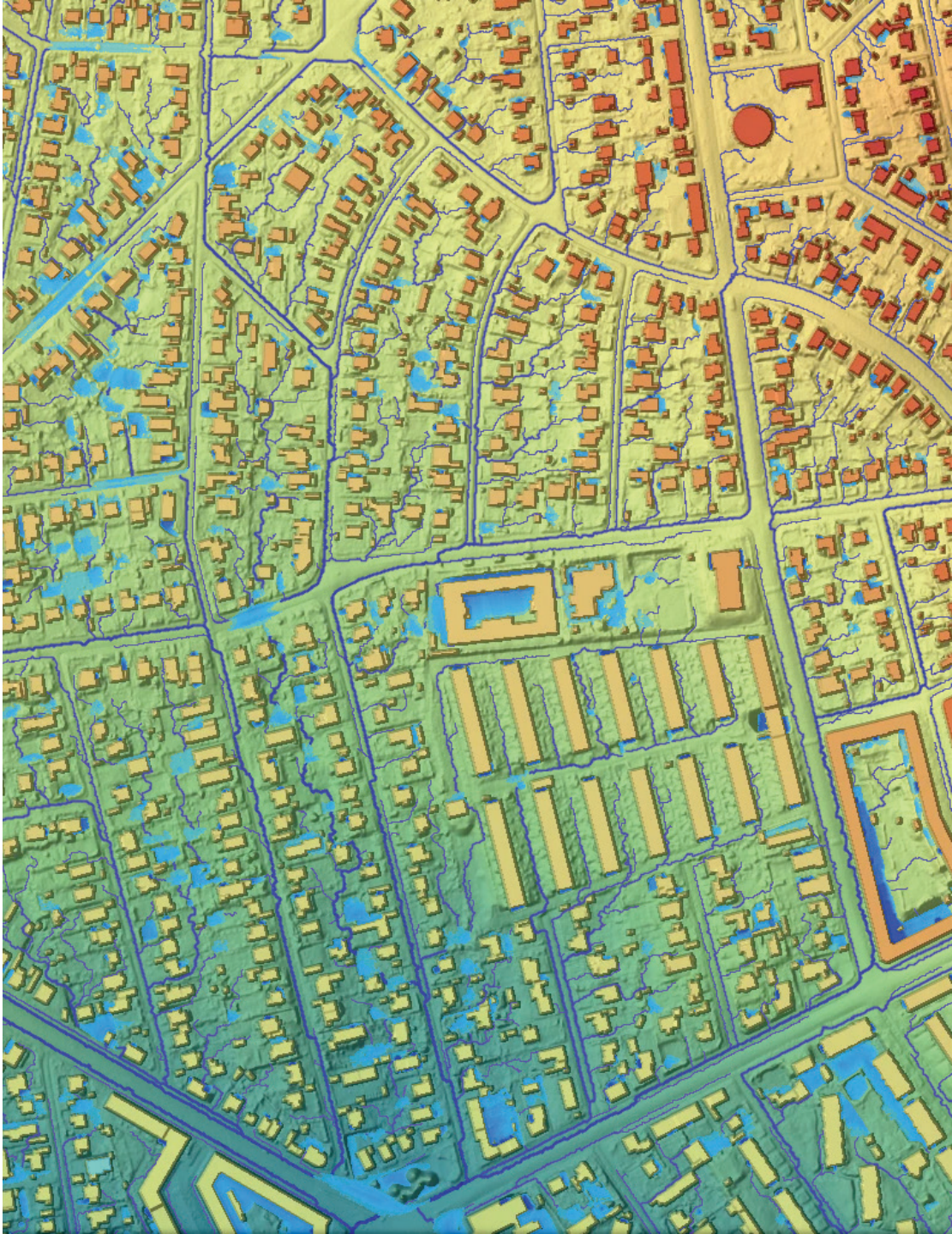
Nogle vigtige forbehold!

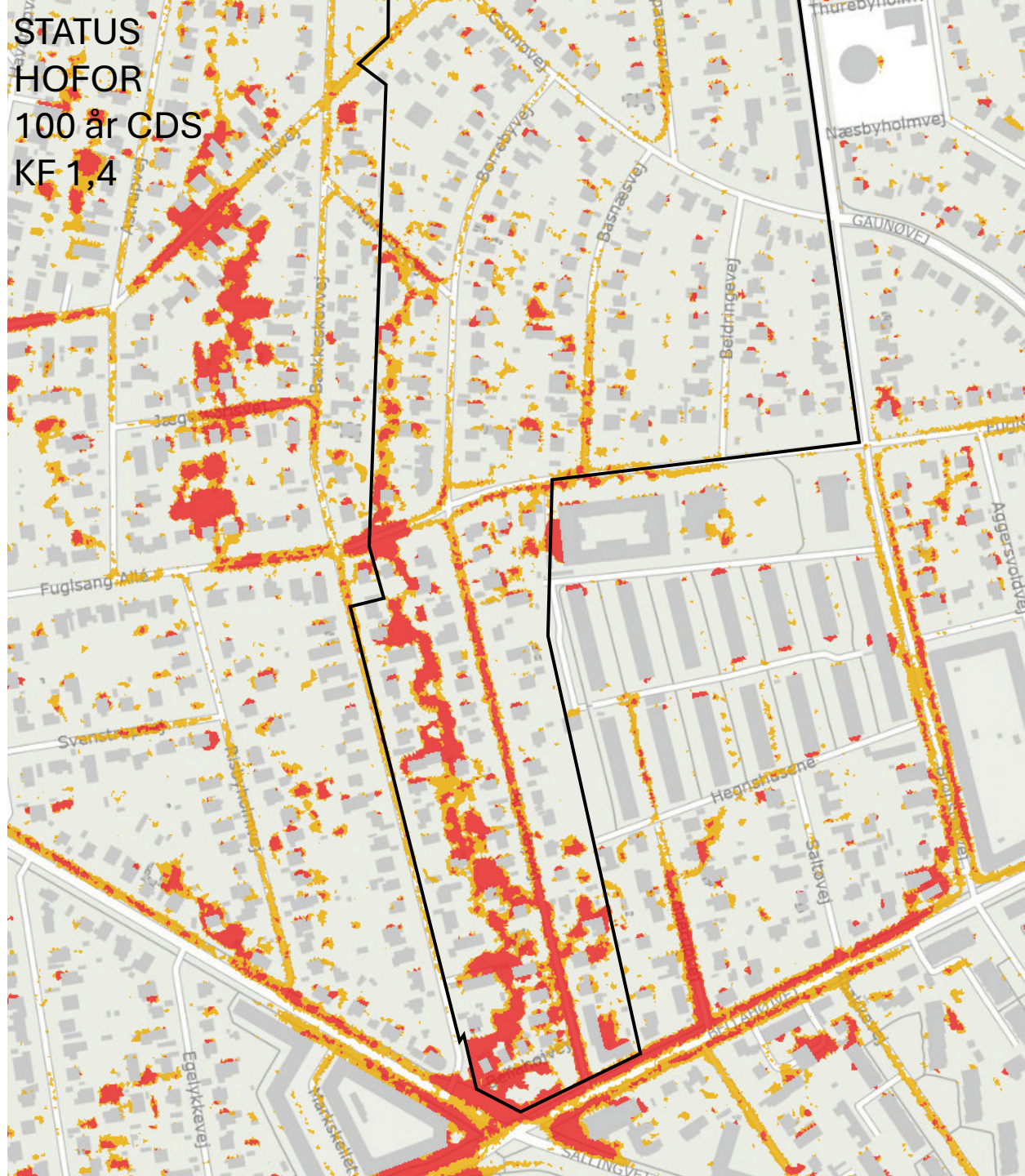
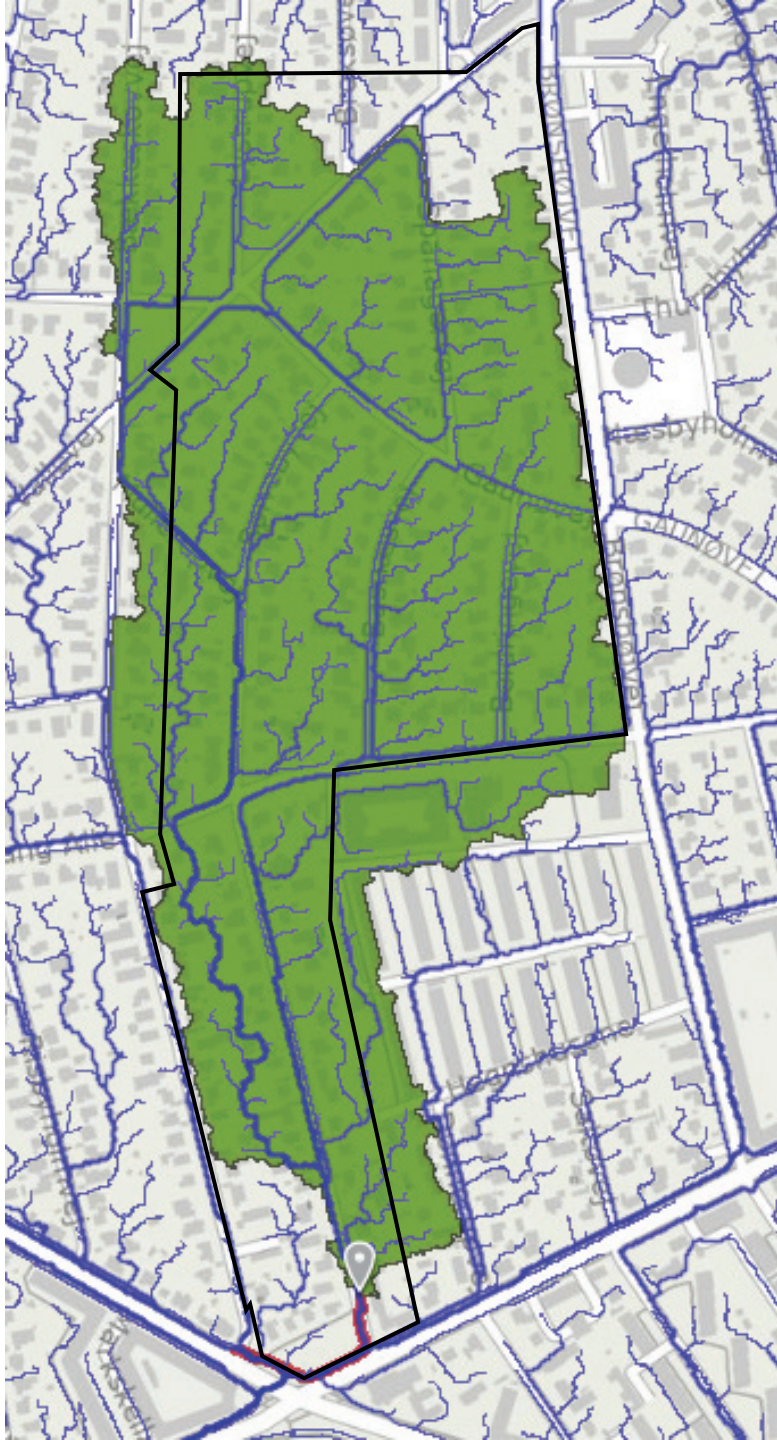
- De forslag vi viser i aften er kun idéer. De kan ændre sig.
- Vi skal i dialog med myndighederne og have tilladelser
- Vi kan ikke løse alle jeres skybrudsproblemer med projektet. Bl.a. skal i selv sikre jeres kælder mod tilbageløb fra kloak og sikre åbninger i huset mod vand fra terræn og jeres eget tagvand.

Modellering af vandstrømninger på terræn

- Implementeringsplanen fra 2013/2015
- Scalgo
- Hofor/KK



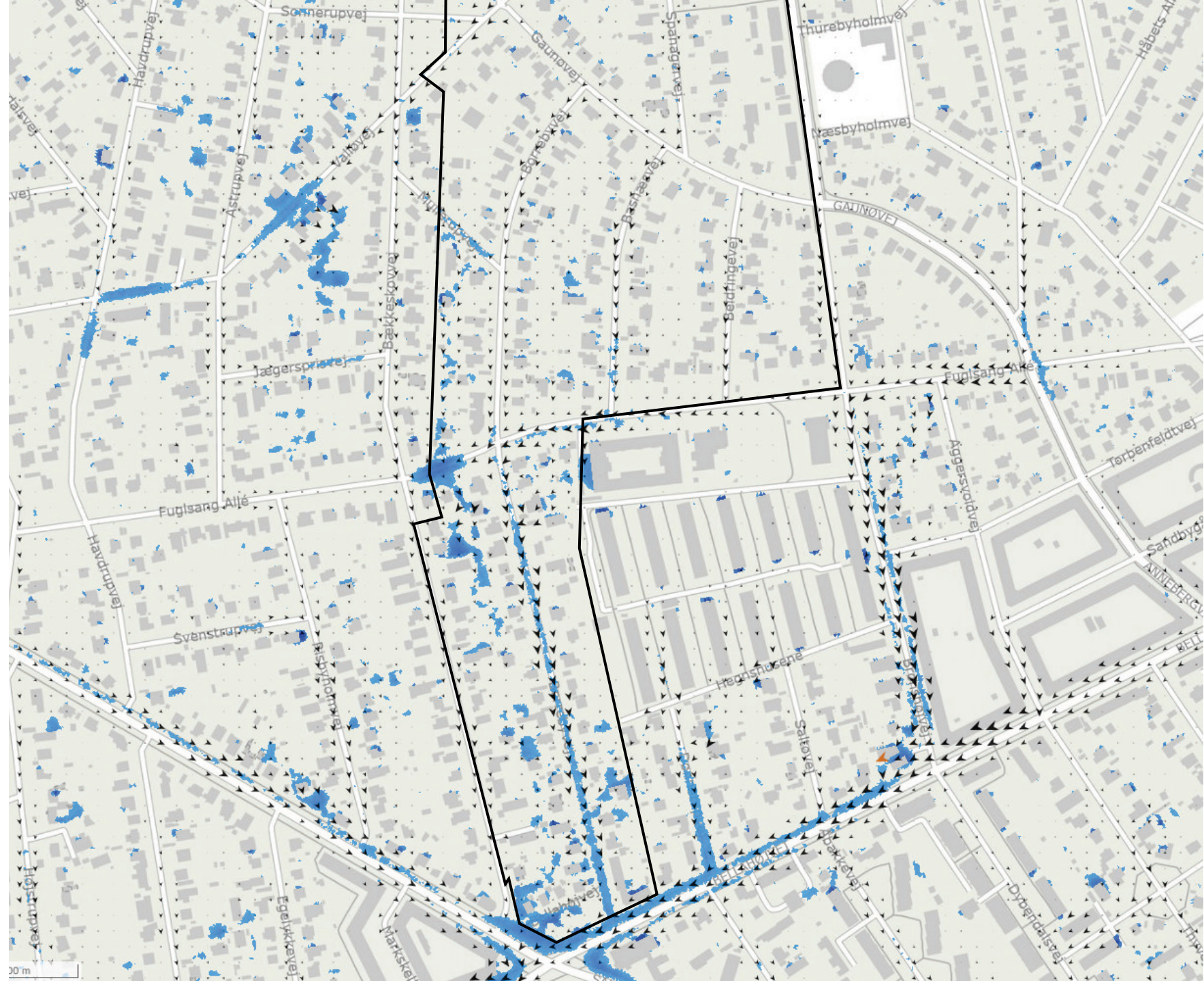




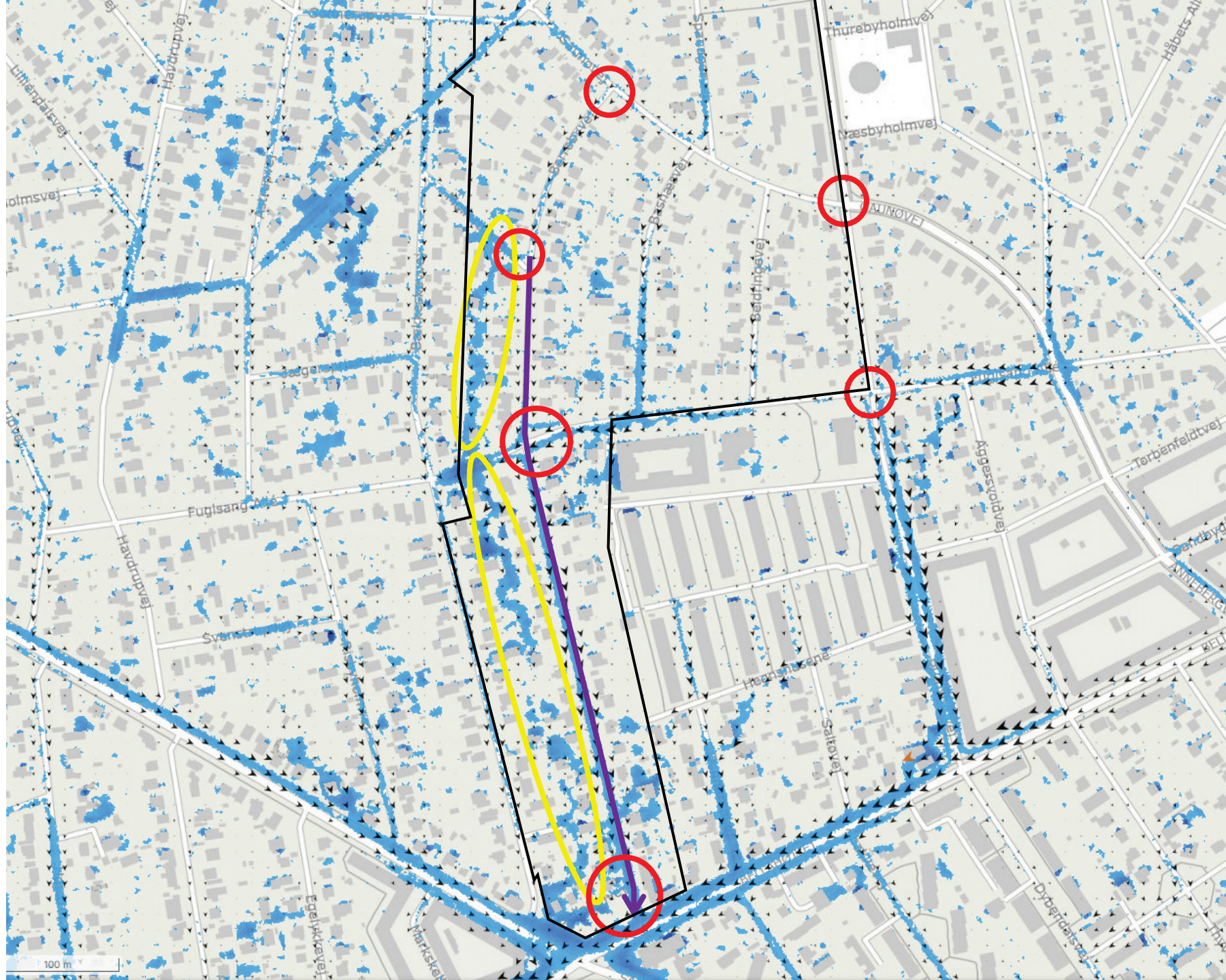
STATUS
>1 cm



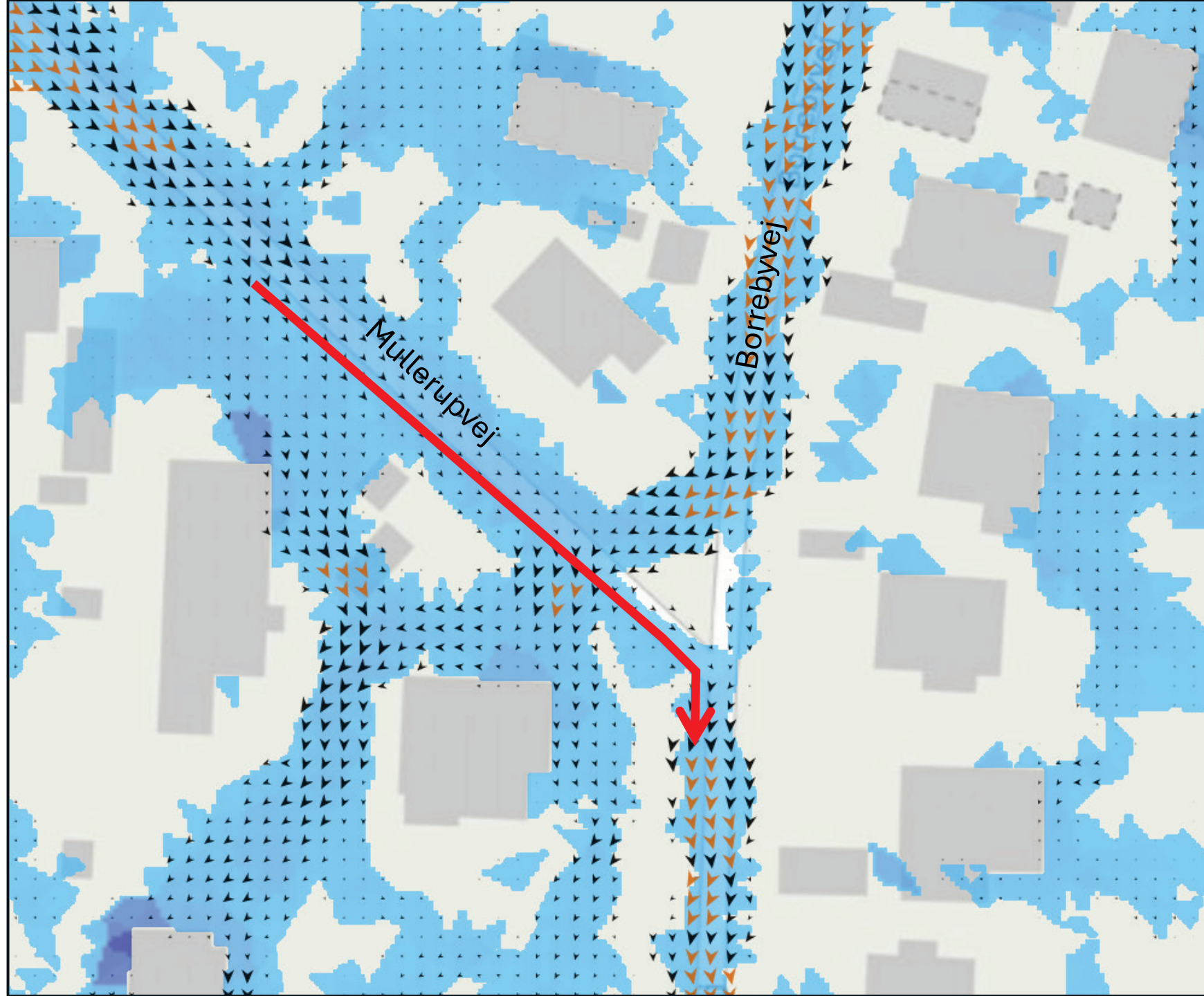
STATUS
>10 cm



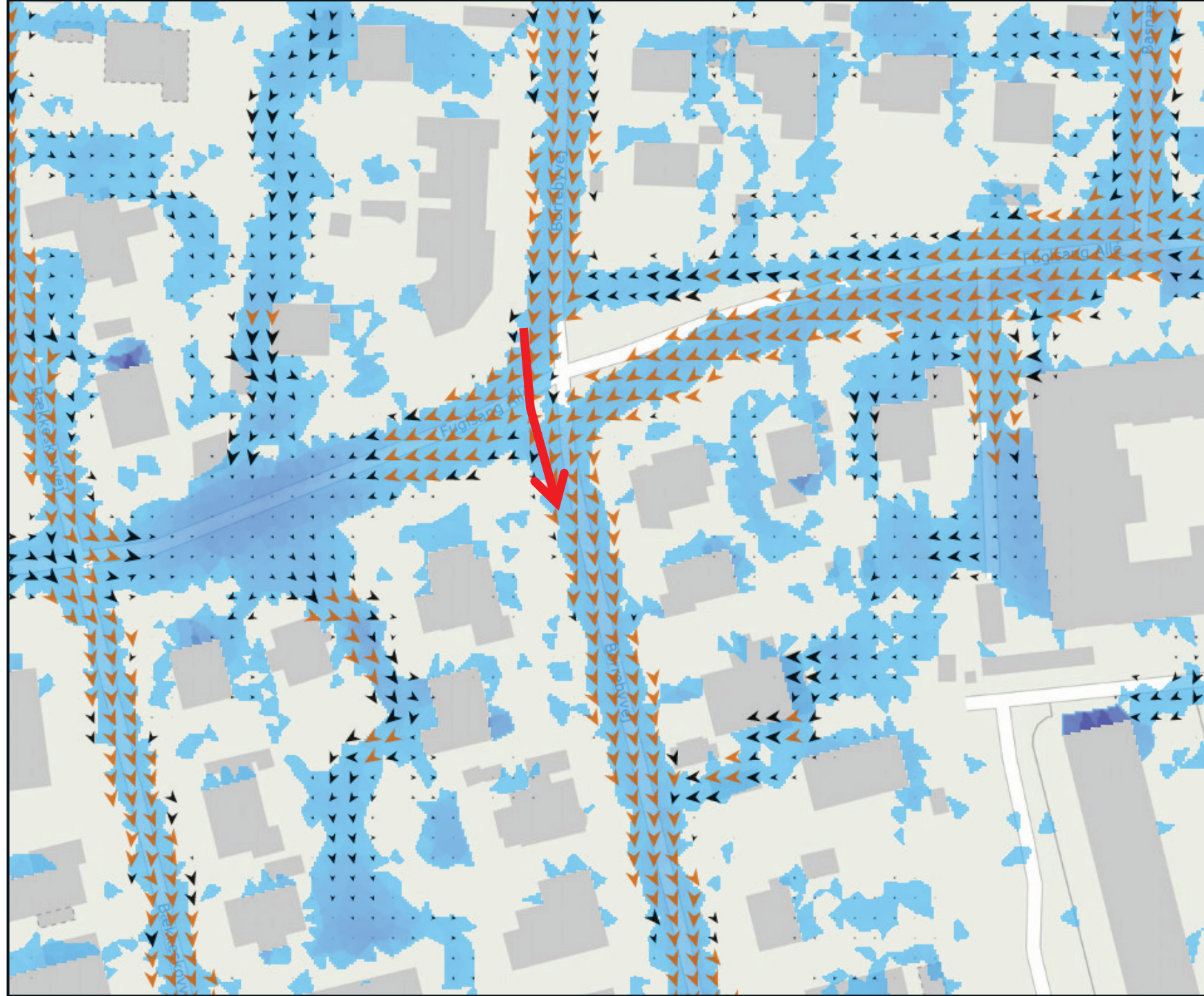
STATUS
>5 cm



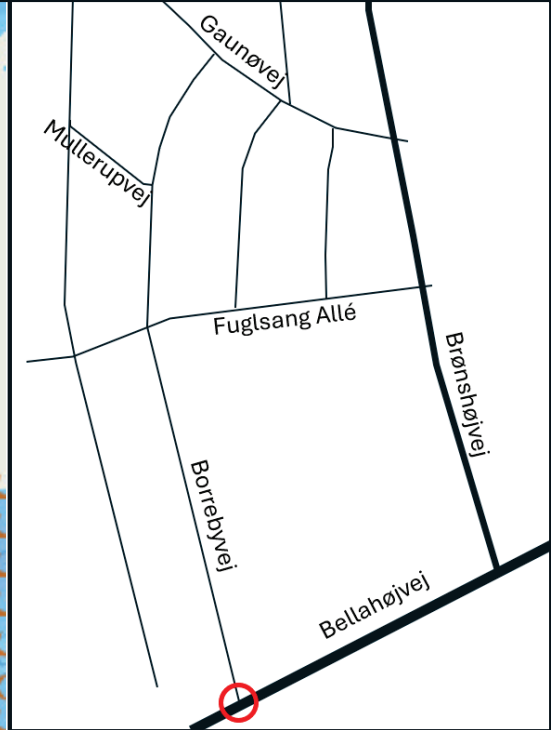
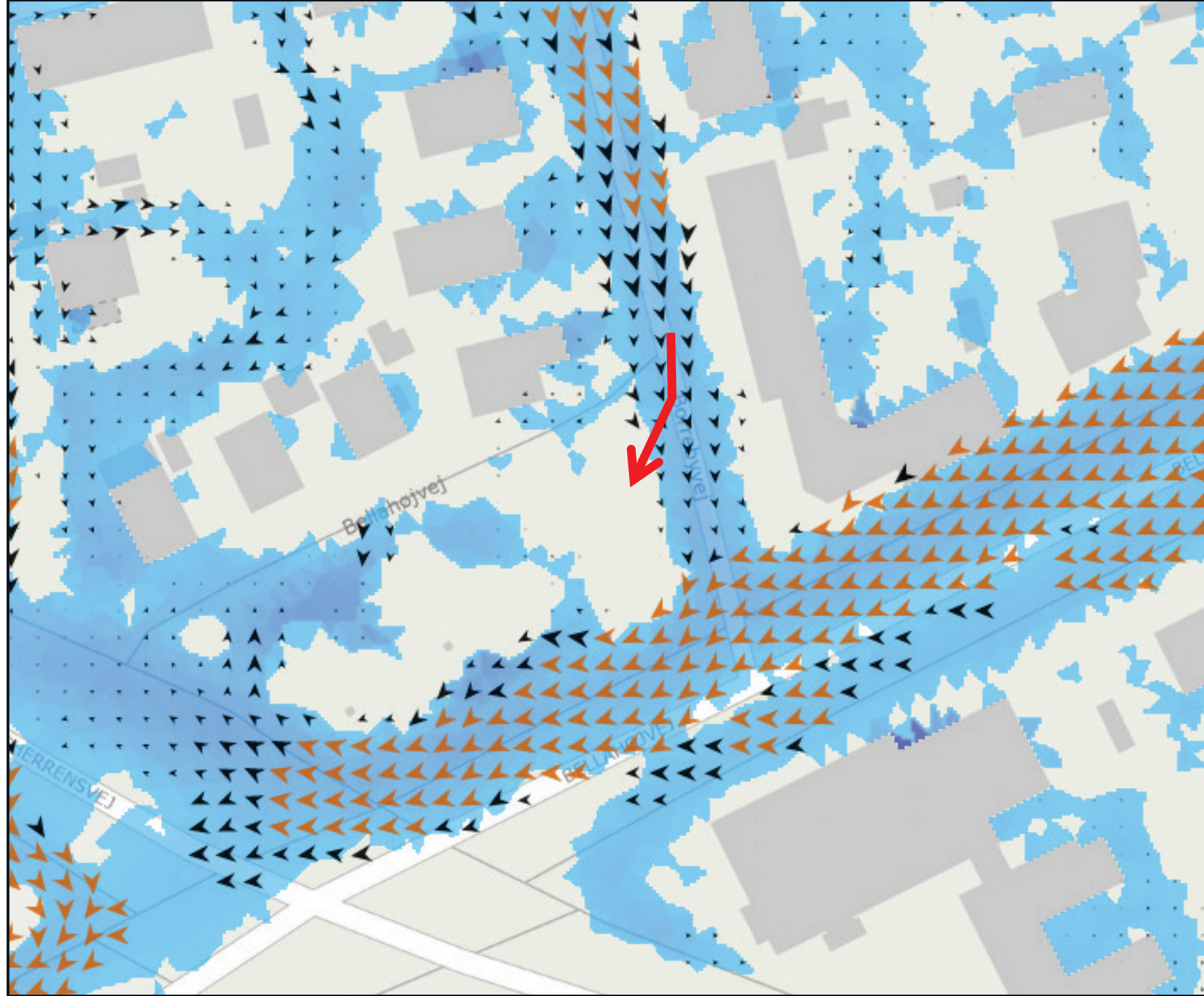
STATUS
HOFOR
100 år CDS
KF 1,4



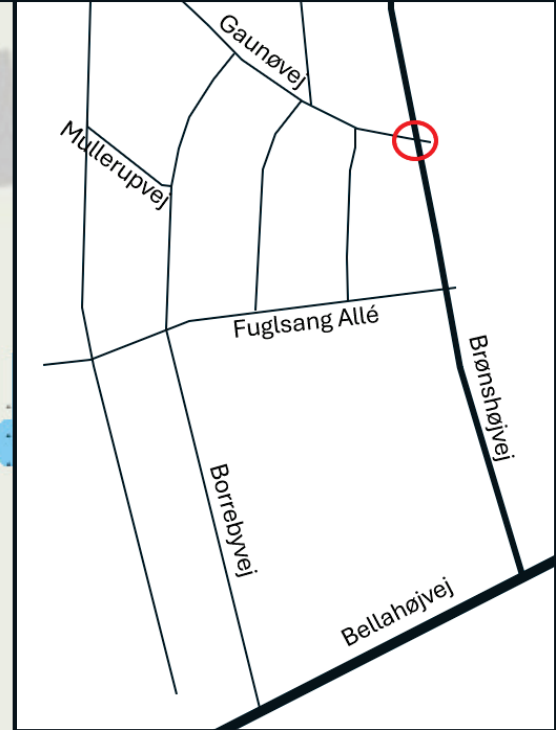
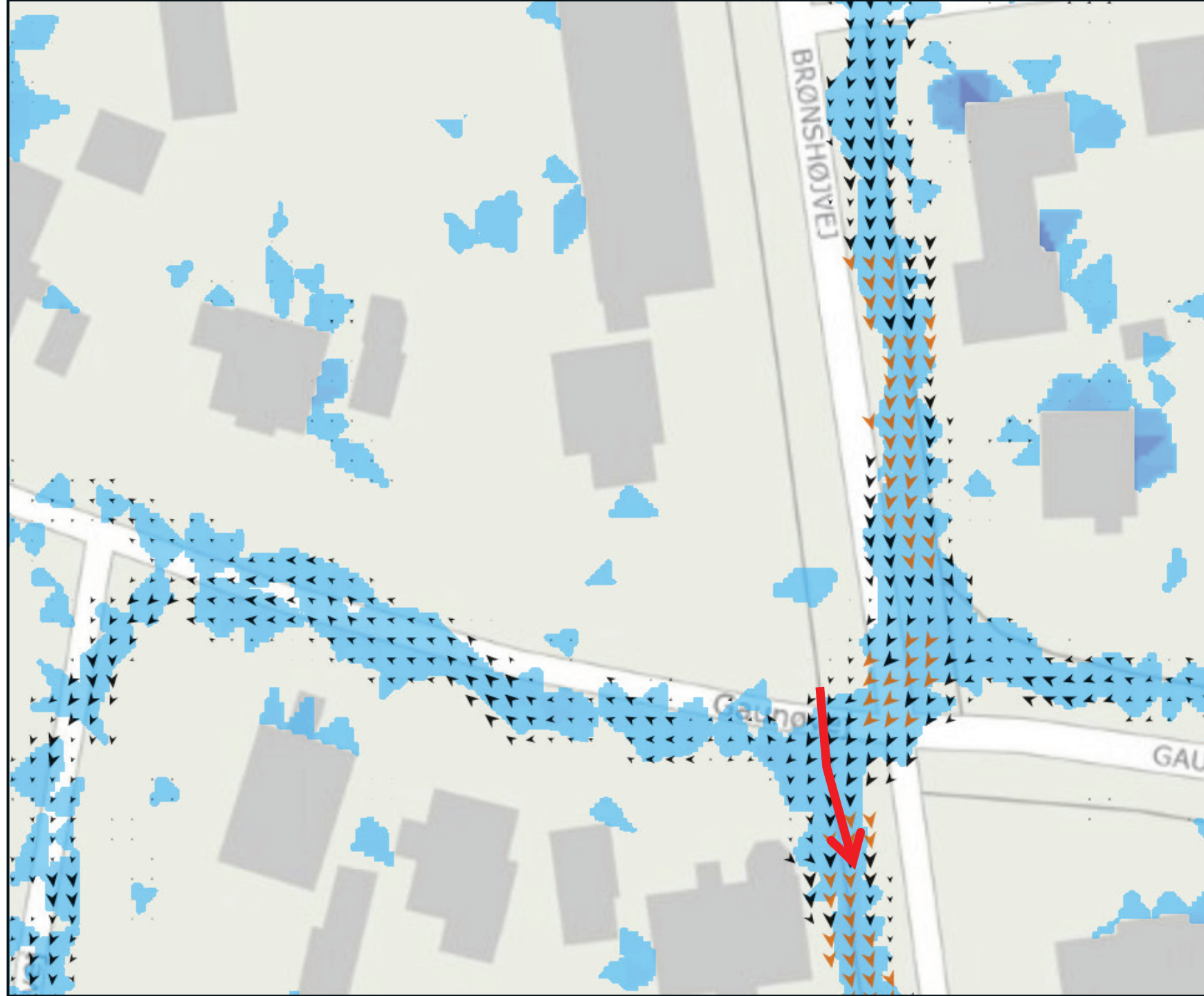
STATUS
HOFOR
100 år CDS
KF 1,4



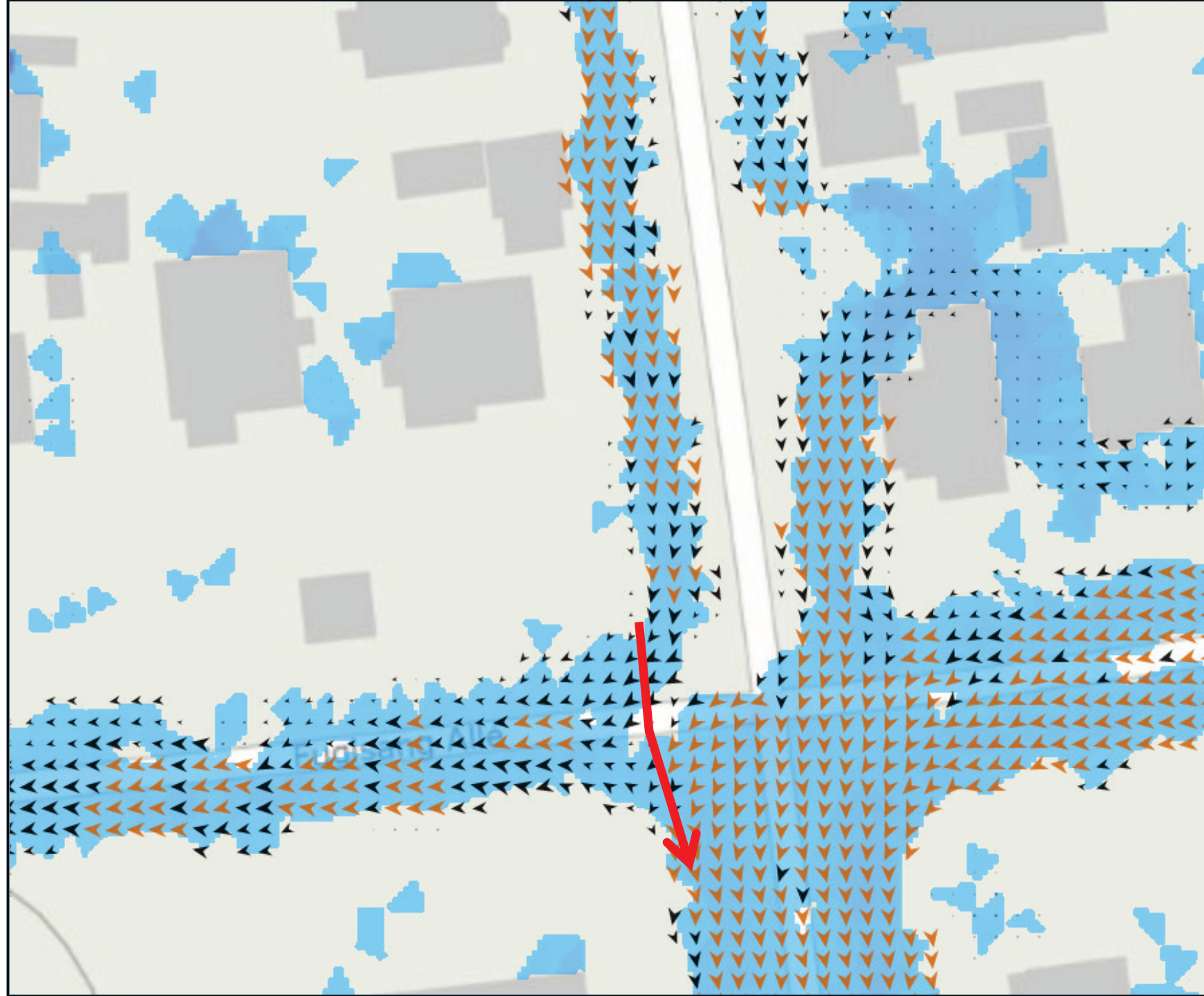
STATUS
HOFOR
100 år CDS
KF 1,4



STATUS
HOFOR
100 år CDS
KF 1,4



STATUS
HOFOR
100 år CDS
KF 1,4



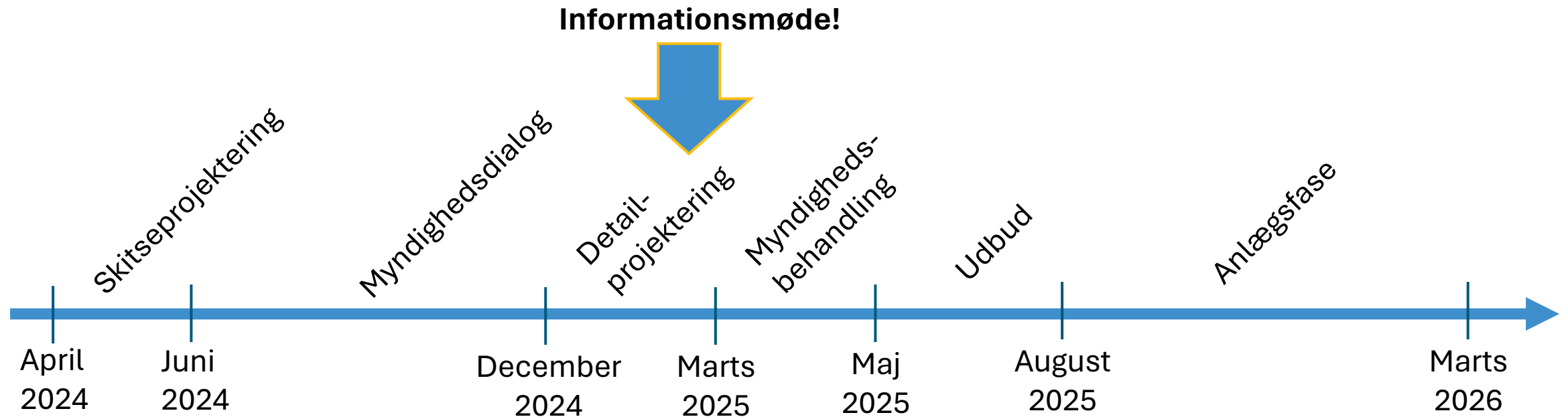
STATUS
HOFOR
100 år CDS
KF 1,4



PLAN
HOFOR
100 år CDS
KF 1,4



Forventet tidsplan



Spørgsmål?